

Product: BANCOQUADRO ISLAND

H105 and H90 *Bancoquadro* kitchen islands with powder coated structure or Luxury metal finish, available with various top finishes.

The tables are arranged with wiring system, thanks to the central column. It is a product thought for the sharing areas.

TECHNICAL FEATURES

Top: the top is available in different finishes and it can be divided in sections based on chosen finishes. The top can be in Melamine, Laminate, Sablè lacquered, Veneer, Ceramic and Back-lacquered etched glass.

Structure: available in powder coated or Luxury metal.

In H105 island the footrest is always in brushed Steel.



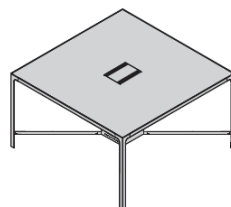
FINISHES

- Top:**
- Melamine:** UE White, Silver, Titanio, Delavè, Comfort, White Snow, Magnolia, Oak 2017.
 - Laminate:** White Snow, Oak, White Fenix.
 - Sablè lacquered,** available in different sample collection colours.
 - Veneer:** Magnolia, White Colour Fir, Nuvola stained Oak, Natural Oak 2016, American Walnut, Eucalyptus, Wengè, Zebrano Brown, Ebano.
 - Ceramic:** Calacatta Soft, Calacatta Glossy, Statuario Soft, Statuario Glossy, Walks 1.0 White, Walks 1.0 Gray, Le Roche Ecrù, Ardoise Ecrù, Ardoise Noir, Nero Marquinia, Le Roche Grey, Industrial Ivory, Industrial Plomb.
 - Back-lacquered etched glass:** White, Silver, Titanio, Brown, Alfa Red.

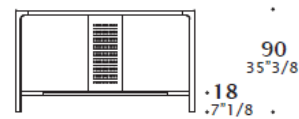
- Structure:**
- Powder coated metal:** matt or glossy Alfa Red, glossy UE White, glossy Silver, matt Titanio, matt Green Black, matt Brown, matt Carbon Glacè, glossy Alfa Red.
 - Metallo Luxury:** Chromed, glossy Nickel Black, matt Bronze, matt Brass, matt Antique Brass, Pewter Quarz, Brunished Cobalt.

Footrest for H105 island: always in brushed Steel.

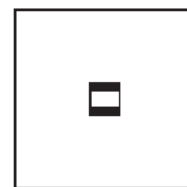
DIMENSIONS
H90 island



Bars H: 18cm

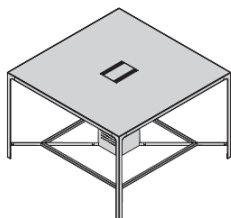


120-160
47 1/4-63"

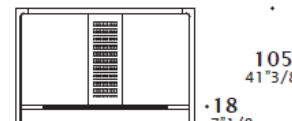


120-160
47 1/4-63"

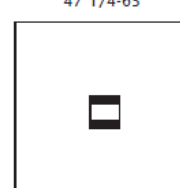
H105 island



Bars and footrest H: 18cm



120-160
47 1/4-63"



120-160
47 1/4-63"